

A photograph of two women with blonde hair, wearing matching bright blue blouses. They are positioned in profile, facing each other, with their hands clasped together in the center. The background is dark, making the blue of their clothing stand out.

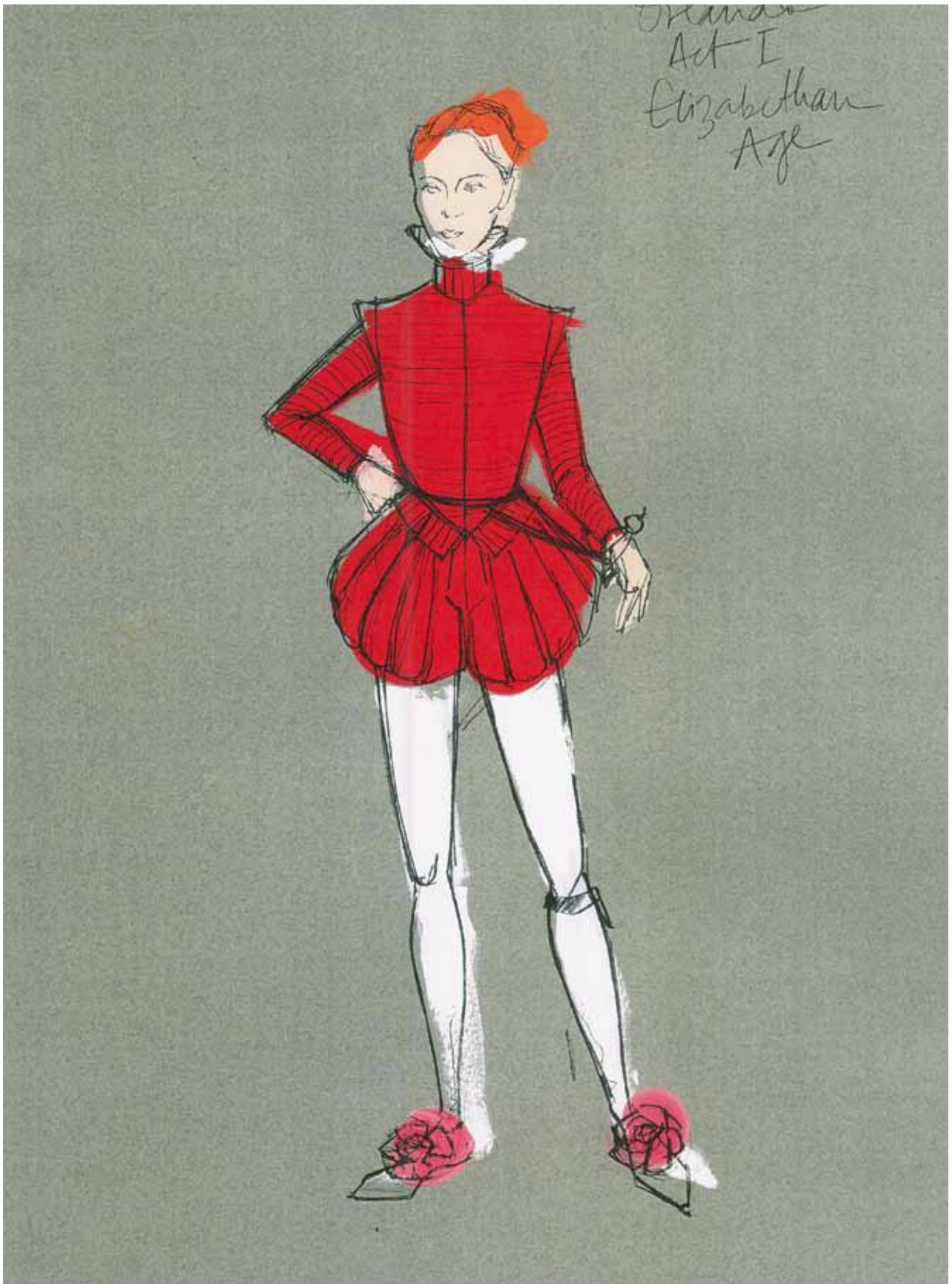
SYDNEY  
THEATRE  
CO  
EDUCATION

# DESIGN SKETCHBOOK

---



Costume design for Sasha in *Orlando*.  
(Costume Sketch: Renée Mulder. ©)



Costume design for Elizabethan Orlando in *Orlando*.  
(Costume Sketch: Renée Mulder. ©)



Costume design for 17th Century Orlando in *Orlando*.  
(Costume Sketch: Renée Mulder. ©)



Costume design for 18th Century Orlando in *Orlando*.  
(Costume Sketch: Renée Mulder. ©)



Costume design for 19th Century Orlando in *Orlando*.  
(Costume Sketch: Renée Mulder. ©)



Costume design for present day Orlando in *Orlando*.  
(Costume Sketch: Renée Mulder. ©)



Costume design for Queen Elizabeth I in *Orlando*.  
(Costume Sketch: Renée Mulder. ©)

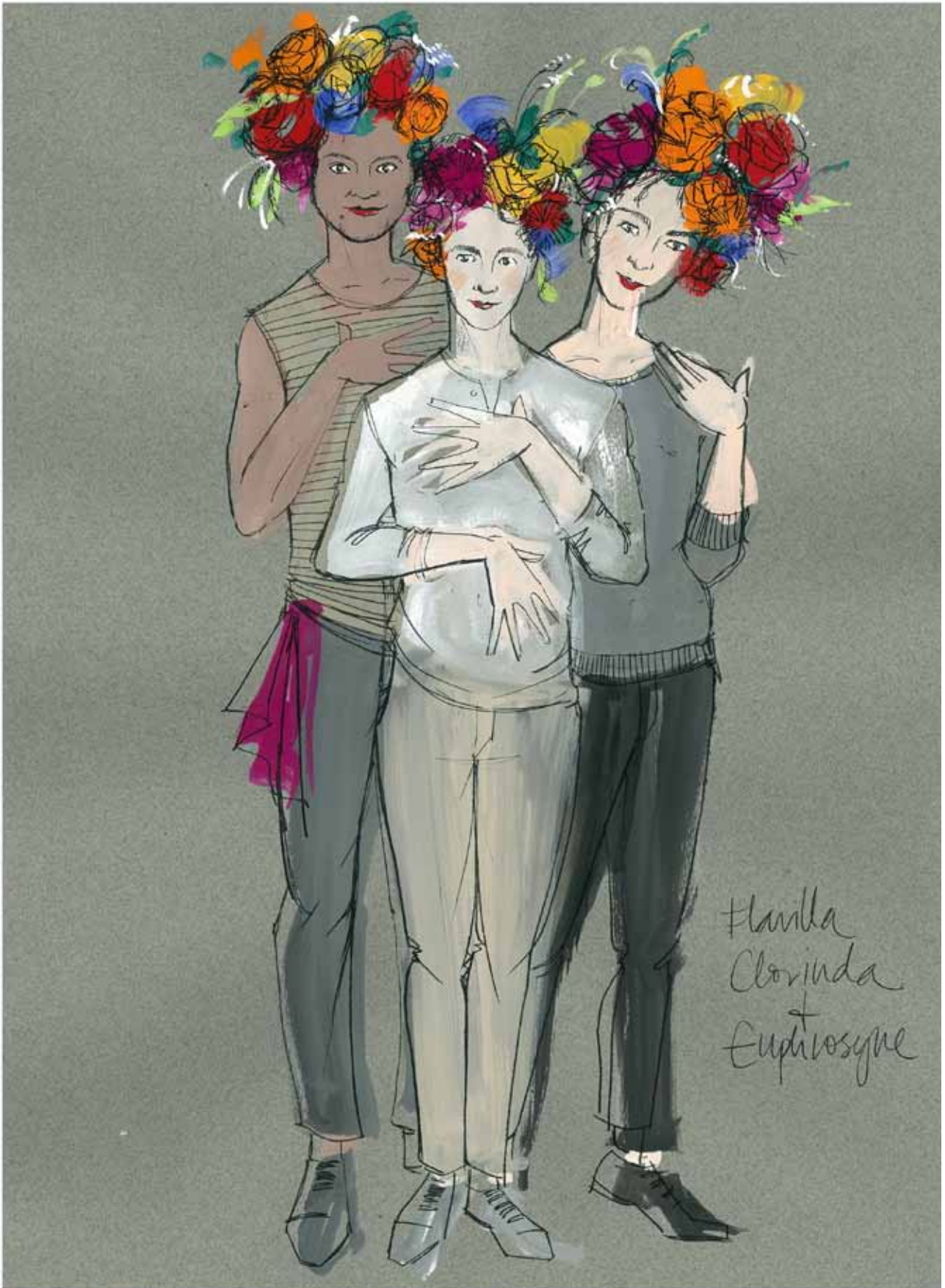




Costume design for the Archduchess/Archduke in *Orlando*.  
(Costume Sketch: Renée Mulder. ©)



Costume design for Marmaduke Bonthrop Shelmerdine Esquire in *Orlando*.  
(Costume Sketch: Renée Mulder. ©)



Costume design for Favilla, Clorinda and Euphrosyne in *Orlando*.  
(Costume Sketch: Renée Mulder. ©)



Costume design for Luisa Hastings Edge as a chorus member in *Orlando*.  
(Costume Sketch: Renée Mulder. ©)



Costume design for Anthony Taufa as a chorus member in *Orlando*.  
(Costume Sketch: Renée Mulder. ©)