

SYDNEY THEATRE CO



2024 SEASON

Sydney Theatre Company acknowledges the Gadigal of the Eora nation who are the traditional custodians of the land and waters on which the Company gathers. We pay our respects to Elders past and present, and we extend that respect to all Aboriginal and Torres Strait Islander people with whom we work and with whom we share stories.



Our STC Angels have provided funding to underwrite the upfront costs of the 2024 Season. We thank and applaud them for their generosity.

ARTISTIC DIRECTOR KIP WILLIAMS

Hello and welcome to this exciting first look at Sydney Theatre Company's 2024 Season! This year my team and I have gathered a collection of incredible plays that showcase the amazing range and variety that the theatrical form has to offer. It is a program that takes in everything, from the hilarious to heartrending, the intimate to operatic, and the international to homegrown.

“It is a program that takes in everything, from the hilarious to heartrending, the intimate to operatic, and the international to homegrown.”

Australian plays have always been the lifeblood of STC and this year we continue this tradition with the world premiere of four brand new Australian plays; Van Badham's hilarious love-farce *A Fool in Love*, Anchuli Felicia King's electrifying one-performer show *American Signs* – both directed by our newest Resident Director Kenneth Moraleda – and the latest addition to Angus Cerini's ongoing fascination with the Australian landscape and character *Into the Shimmering World*, directed by our Director

of New Work and Artistic Development, Paige Rattray. In addition to these, I am thrilled to be writing and directing the climactic part of the cine-theatre trilogy, *Dracula*, adapted from Bram Stoker's classic novel, which follows on from *The Picture of Dorian Gray* and *Strange Case of Dr Jekyll and Mr Hyde*.

As well as premiering these brand-new works in 2024, next year will see three recent new Australian plays cement their position in the canon with encore seasons. I am delighted to share that in 2024 we are mounting the much-anticipated return seasons of *Julia* by Joanna Murray-Smith and directed by Sarah Goodes, *RBG: Of Many, One* by Suzie Miller and directed by Priscilla Jackman and *No Pay? No Way!* by Dario Fo, adapted by Marieke Hardy and directed by Sarah Giles. We are thrilled to be presenting two transfer productions, created by our colleagues at Melbourne Theatre Company and Griffin Theatre Company, respectively: *Sunday* by Anthony Weigh and directed by Sarah Goodes, and *Golden Blood* by Merlynn Tong and directed by Tessa Leong. It also gives me great pleasure to be able to announce that *Julia* and *RBG: Of Many, One* will also both be continuing to national tours in 2024.

And as we look to add these works to our canon, we also look to reinvestigate an existing Australian classic, which this year is Muruwari playwright Jane Harrison's 1996 seminal play *Stolen*; given vivid new perspective by our Richard Wherrett Fellow and Wilman Noongar man Ian Michael who will direct an extraordinary ensemble cast.

“Australian plays have always been the lifeblood of STC ”

For our youngest audience members, we are overjoyed to be presenting Barking Gecko Theatre's beautiful and insightful puppet-show *Cicada*, an adaptation of Shaun Tan's classic picture book.

In 2024 you can also look forward to an extraordinary offering of the very best of contemporary international playwriting, including two Pulitzer Prize-winners in *Sweat* by Lynn Nottage, directed by our Resident Director Shari Sebbens, and *Cost of Living* by Martyna Majok, co-directed by Dan Daw and Priscilla Jackman.

“In 2024 you can also look forward to an extraordinary offering of the very best of contemporary international playwriting”

To complete this thrilling collection of plays, I am extremely excited to announce two major first time co-productions taking place during our 2024 Season. With the Gate Theatre in Dublin, we will mount a cross-continental season of Thomas Bernhard's *The President*, directed by Tom Creed and starring icons Hugo Weaving and Olwen Fouéré. And, with renowned musical theatre producers Michael Cassel Group, the multi award-winning sensation *Dear Evan Hansen* will



Photo: Rene Vaile

have its Australian premiere in a brand-new production directed by Dean Bryant.

Our 2024 Season is a glittering array of stories, experiences and perspectives that we've gathered into an explosive showcase of theatre-making talent. I, for one, cannot wait to jump into the mix and I do hope you'll join us.

Yours Sincerely,

Kip Williams
Artistic Director & CO-CEO

A FOOL IN LOVE

BY VAN BADHAM
AFTER LA DAMA BOBA BY LOPE DE VEGA
DIRECTED BY KENNETH MORALEDA
WORLD PREMIERE

Designer

Isabel Hudson

Lighting Designer

Benjamin Brockman

Composer &

Sound Designer

Michael Toisuta

With

Melissa Kahraman

Contessa Treffone

Megan Wilding

INSIGHT EVENTS

Night with the Artists

Tue 20 Feb, post-show

Falling in love is a no-brainer

From the deliciously wicked pen of Van Badham, who most recently had you in stitches with *Banging Denmark*, comes an uproarious night out at the theatre that brilliantly lampoons our contemporary obsession with wealth and status, whilst leaving enough time for a selfie session by the pool!

Featuring the comedic talents of Melissa Kahraman (*Hubris & Humiliation*), Contessa Treffone (*On the Beach*) and Megan Wilding (*The Importance of Being Earnest*), *A Fool in Love* is an adaptation of Spanish Golden Age playwright Lope de Vega's classic comedy *La dama boba*, refreshed and ingeniously infused with a dose of twenty-first century oomph.

In the well-heeled seaside town of Illescas, the beautiful Octavio sisters – the smart and social climbing Vanessa (Kahraman) and the lovable and, perhaps, not-so-smart Phynayah (Treffone) – are desperate to save their family from financial ruin. In order to inherit her eccentric uncle's fortune, Phynayah must get engaged before she turns 30. The catch? These days, suitors don't just want beauty, they expect brains as well.

Equal parts delightful rom-com and razor-sharp spoof, this production will retain all the joy and revelry of a seventeenth century farce at the same time as putting contemporary gender and class politics under the microscope. Bold, bawdy and gut-bustingly funny, *A Fool in Love* is social satire at its very cheekiest.

6 FEB – 17 MAR | WHARF 1 THEATRE

APPROX. DURATION

2 hrs 10 mins
including interval

CONTENT

Strong language



Contessa Treffone and Melissa Kahraman. Photo: Rehe Valie

RBG: OF MANY, ONE

BY SUZIE MILLER

DIRECTED BY PRISCILLA JACKMAN

ENCORE SEASON

Designer

David Fleischer

Lighting Designer

Alexander Berlage

Composer &

Sound Designer

Paul Charlier

Assistant Director

Sharon Millerchip

With

Heather Mitchell

INSIGHT EVENTS

Night with the Artists

Mon 19 Feb, post-show

National Tour supported by
STC Angels and RBG Donor
Circle: Lead Patrons David
Gonski AC & Orli Wargon OAM

Original production supported
by STC Angels, Frances Allan &
Ian Narev and Mark Coulter &
Dr Adam Bayes

“One of the all-time great performances” *Sydney Morning Herald*

After a wildly popular, sold-out premiere season in 2022, this smash-hit production returns to the stage with the brilliant Heather Mitchell reviving her award-winning “virtuosic performance” (*The Conversation*) of the woman who changed the face of the American legal system: the indomitable Ruth Bader Ginsburg.

The second woman to be appointed to the US Supreme Court, Ruth Bader Ginsburg was both a trailblazer in the American judiciary and a fierce advocate for gender equality and reproductive rights. Now, her life is brought to the stage by the extraordinary pen of Olivier Award-winning Australian playwright Suzie Miller (*Prima Facie*), in a story that chronicles Ginsburg’s wins and dissents, traces her steps forward and the steps back, and brings you right into the room with Ruth at the most pivotal moments of her life.

Director Priscilla Jackman reunites with Mitchell to reconjure RBG in this once-in-a-generation theatrical event that is “magnificent from start to finish” (*Limelight*). Don’t miss your second chance to see this sublime production.

9 FEB – 23 MAR | DRAMA THEATRE, SYDNEY OPERA HOUSE

PRESENTING PARTNER

Allens >> | 200
Linklaters

APPROX. DURATION

1 hr 35 mins
no interval

CONTENT

Adult themes, herbal cigarettes
and complete theatrical blackout



Heather Mitchell. Photo: Rene Vaile

INTO THE SHIMMERING WORLD

BY ANGUS CERINI
DIRECTED BY PAIGE RATTRAY
WORLD PREMIERE

Designer
David Fleischer
**Composer &
Sound Designer**
Clemence Williams

With
Kerry Armstrong
Colin Friels

INSIGHT EVENTS
Night with the Artists
Tue 23 Apr, post-show

Wharf 1 Theatre (Extended) is an exciting large-scale theatre format which combines both Wharf 1 and Wharf 2 Theatres.

The full force of nature

From the monumental playwriting talents of 2020 Patrick White Playwrights Fellow Angus Cerini (*The Bleeding Tree*, *Wonnangatta*) comes this epic and poetic story of love, loss and renewal.

Stage and screen legends Colin Friels and Kerry Armstrong play Ray and Floss, a farming couple who have lived off the land their entire adult lives. Through boom times and bust, they've been each other's support and constant companion. But at the tail end of a once-in-a-generation drought, both are on the precipice of earth-shattering change and transformation.

Into the Shimmering World will beguile audiences with its gothic and dreamlike take on the Australian landscape, its lush and musical language, and its powerful exploration of the depths of our national psyche.

STC Director of New Work and Artistic Development Paige Rattray (*Do not go gentle...*) will premiere this new Australian masterpiece in the glorious expanse of an extended Wharf 1 Theatre, in a production that is set to be a rich evocation of the mysteries of the natural world and a lyrical look at humanity's changing relationship to it.

What awaits Ray and Floss when the drought finally breaks?

2 APR – 19 MAY | WHARF 1 THEATRE (EXTENDED)

APPROX. DURATION
90 mins
no interval

CONTENT
Infrequent strong language,
references to self harm, and gunshots



Kerry Armstrong and Colin Friels. Photo: Rene Vaile

NO PAY? NO WAY!

BY DARIO FO AND FRANCA RAME
ADAPTED BY MARIEKE HARDY
DIRECTED BY SARAH GILES
ENCORE SEASON

Designer

Charles Davis

Lighting Designer

Paul Jackson

Composer &

Sound Designer

Steve Francis

With

Glenn Hazeldine

Mandy McElhinney

Aaron Tsindos

Catherine Vän-Davies

INSIGHT EVENTS

Night with the Artists

Mon 15 Apr, post-show

Supported by STC Angels.

Original production supported

by Anita & Luca Belgiorno-

Nettis Foundation

“Hysterically funny” *Time Out*

When *No Pay? No Way!* opened in 2020 it was instantly met with standing ovations and glowing reviews. Now, one of Sydney Theatre Company’s funniest and most beloved productions in recent years returns to the Drama Theatre and to a world more in need of its wild, farcical wisdom than ever. Directed by the award-winning Sarah Giles and adapted from the original Italian by ABC comedy powerhouse Marieke Hardy, this 1970s joyride satirises the world of dollars and cents to uproarious effect.

Prices are out of control – and so is Antonia. Sick of having barely enough to pay the gas bill, she leads an uprising at a local supermarket that sees a group of angry housewives shoplift ‘til they drop. Now, with a pile of newly ‘liberated’ loot, Antonia – played by Mandy McElhinney (*The Tempest*) – and her best friend Margherita – Catherine Vän-Davies (*Constellations*) – embark on a ludicrous, laugh-a-minute escapade to stay three steps ahead of the law.

The work of one of Italy’s most lauded playwrights, Dario Fo, *No Pay? No Way!* mixes political satire, hilarious plot twists and sharp-as-a-tack dialogue to create a thrilling experience that will have you in fits of laughter from beginning to end.

Also featuring first-rate comedy legends Glenn Hazeldine (*Cosi*), and Aaron Tsindos (*The Tempest*), this production is both exhilarating and exuberantly funny and prompted one reviewer to remark, “I haven’t heard an audience laugh so loud for a long time” (*Limelight*).

6 APR – 11 MAY | DRAMA THEATRE, SYDNEY OPERA HOUSE

APPROX. DURATION

2 hrs 20 mins
including interval

CONTENT

Frequent strong language
and sexual references



Mandy McElhinney and Catherine Vän-Davies. Photo: Rene Valle

THE PRESIDENT

BY THOMAS BERNHARD
TRANSLATED BY GITTA HONEGGER
DIRECTED BY TOM CREED
AUSTRALIAN PREMIERE

Designer
Elizabeth Gadsby
Associate Director
Ian Michael

With
Olwen Fouéré
Hugo Weaving

INSIGHT EVENTS
Night with the Artists
Mon 22 Apr, post-show

Thomas Bernhard,
Der Präsident,
1975, © Suhrkamp Verlag
AG Berlin

A theatrical masterpiece performed by two icons

Hugo Weaving returns to the stage, joined by one of Ireland's greatest actors, Olwen Fouéré (*Terminus*). In a first-time co-production, Sydney Theatre Company will join forces with the renowned Gate Theatre, Dublin to mount this genius piece of twentieth century playwriting. For this rare and remarkable international collaboration, the cast and creative team will be drawn from the finest Irish and Australian theatre-making talents to create a unique, global theatrical event.

Weaving and Fouéré play the President and First Lady of a small, unnamed country, whose regime is under siege. Despite a revolution brewing right outside their front door, the couple seem frozen in time. What follows is a mysterious trip into a complicated marriage and an unravelling political system.

Playwright Thomas Bernhard is one of the most respected European writers of recent times. On par with Beckett and Camus, his darkly comic vision and prophetic voice are both modern marvels.

At the helm is Tom Creed, the award-winning Irish director behind critically-lauded productions at the Edinburgh International Festival, the Barbican Centre in London, and The Public Theater in New York City. With a creative team featuring world-class Australian talent, including Designer Elizabeth Gadsby (*Appropriate*) and Associate Director Ian Michael (*Constellations*), Creed will bring this searingly relevant story of ambition, power and change to an Australian audience for the very first time. Along with these two titans of acting, we are in for an extraordinary night of theatre.

13 APR – 18 MAY | ROSLYN PACKER THEATRE

APPROX. DURATION
2 hrs 20 mins
including interval

CONTENT
Adult themes and smoking



CO-PRODUCER



STOLEN

BY JANE HARRISON
DIRECTED BY IAN MICHAEL

Designer
Renée Mulder
**Composer &
Sound Designer**
James Brown

With
Jarron Andy
Luke Carroll
Kartanya Maynard
Stephanie Somerville

INSIGHT EVENTS
Night with the Artists
Thu 27 Jun, post-show

From home, from Country

Five adults stand in a darkened room, their childhoods playing out across the walls like shadows. Five suitcases in their hands, each filled with painful memories and forgotten histories. Five beds, perfectly made and ready to receive five children who have been torn away from their families. Five lives, stolen.

Sydney Theatre Company is thrilled to welcome back Muruwari playwright Jane Harrison (*The Visitors*) who first penned this classic Australian play in 1998. Following his breakout hit and STC directorial debut *Constellations*, STC Resident Director and Wilman Noongar man Ian Michael will helm this bold new production of a play that is just as powerful, moving, and vitally relevant as the day it premiered.

Stolen tells the stories of Jimmy, Ruby, Shirley, Sandy, and Anne: five members of the Stolen Generation, whose lives are irrevocably altered by their experiences in a social and political system that sought to erase their cultural identity forever.

With its script that slips seamlessly between the past and the present, and an incredible cast featuring featuring Waanyi, Djiru, Kuku Yalanji and Yidinji actor Jarron Andy, Wiradjuri and Ngunnawal actor Luke Carroll (*Black is the New White*), Truwulway and Nunga actor Kartanya Maynard (Amazon Prime's *Deadloch*) and Martu actor Stephanie Somerville (*Chalkface*), *Stolen* is essential viewing as a record of Australian history, a deeply touching human story, and a galvanizing light shone on the ongoing injustices faced by the First Nations people of this country.

6 JUN – 6 JUL | WHARF 1 THEATRE

APPROX. DURATION
90 mins
no interval

CONTENT
Strong language, racist language, depiction of suicide, references to child abuse, violence and intergenerational trauma



Kartanya Maynard and Luke Carroll. Photo: Rene Vaile

DRACULA

BY BRAM STOKER

ADAPTED AND DIRECTED BY KIP WILLIAMS

WORLD PREMIERE

Designer

Marg Horwell

Lighting Designer

Nick Schlieper

Associate Director

Ian Michael

With

Zahra Newman

INSIGHT EVENTS

Night with the Artists

Tue 23 Jul, post-show

A gothic masterpiece reimaged

First came *The Picture of Dorian Gray*. Then *Strange Case of Dr Jekyll and Mr Hyde*. Now comes the final and most ambitious part of Kip Williams' already-legendary gothic trilogy, and with it – one of the most iconic figures in world literature: the prince of darkness, Count Dracula.

Williams reunites with Designer Marg Horwell and Lighting Designer Nick Schlieper to bring you this riveting study of the monster within. Starring the award-winning Zahra Newman (*Fences*, *Julius Caesar*) performing every single role, this sweeping, legendary adventure will combine live video, pre-recorded film and a superhuman live performance in the latest iteration of the hybrid-genre 'cine-theatre'.

In a ruined castle, high in the Transylvanian wilderness, a mysterious presence is lurking. Is it man or beast? Angel or demon? For centuries, Count Dracula has held his remote corner of the world in a vice grip of terror. But evil is on the move and the residents of Victorian London will soon fall under its bewitching, transformative spell.

Experience the paragon of horror stories anew in this radical and stupendous combination of cutting-edge technology, exquisite design, herculean acting, and visionary storytelling. This will be an unmissable night of theatre and the final piece in one of the most innovative theatrical feats in recent history.

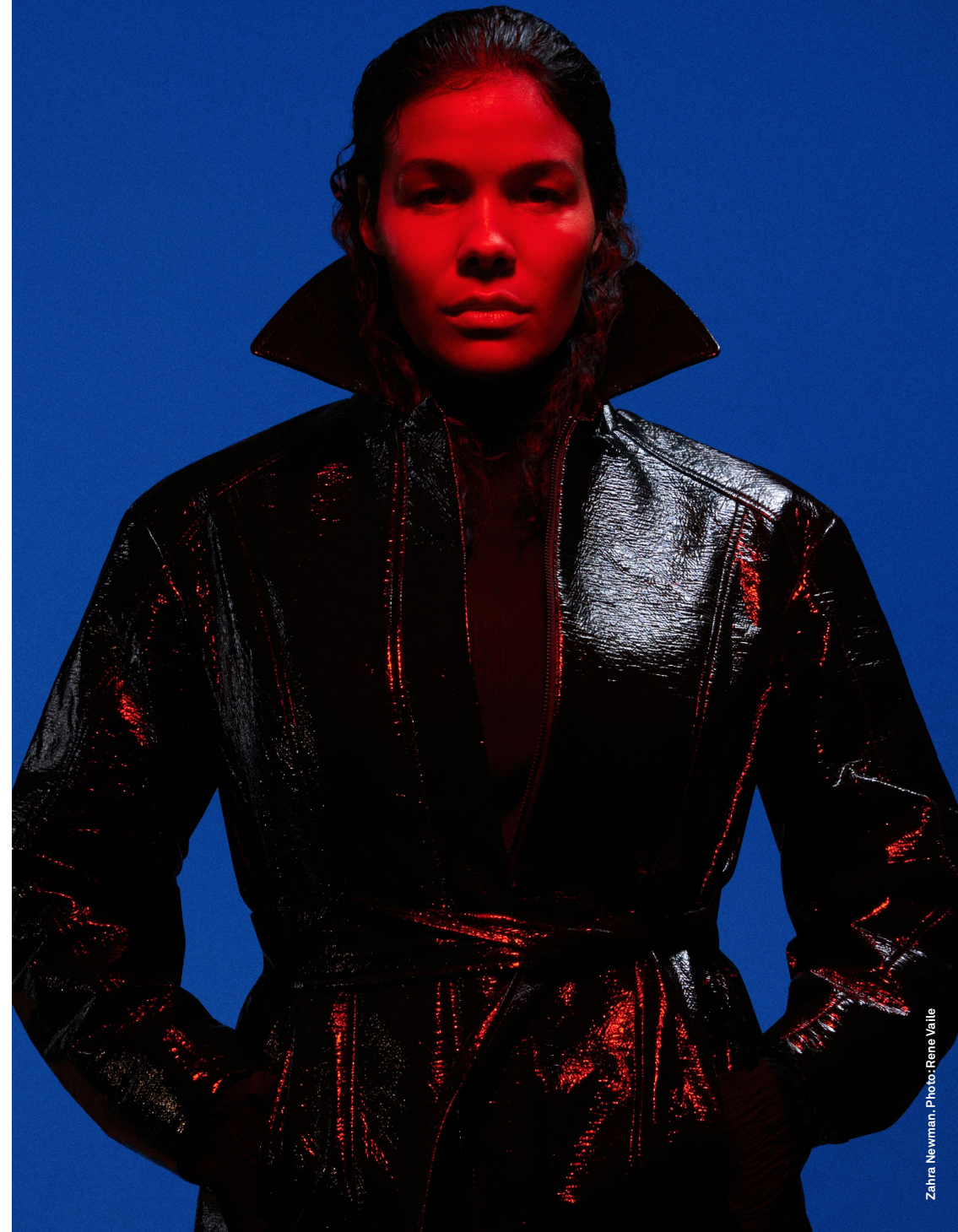
2 JUL – 4 AUG | ROSLYN PACKER THEATRE

APPROX. DURATION

2 hrs
no interval

CONTENT

Adult themes and descriptions of violence



Zahra Newman. Photo: Rene Valle

COST OF LIVING

BY MARTYNA MAJOK

DIRECTED BY PRISCILLA JACKMAN AND DAN DAW

AUSTRALIAN PREMIERE

With

Dan Daw
Kate Hood
Philip Quast

INSIGHT EVENTS

Night with the Artists

Tue 30 Jul, post-show

A multi award-winning story of survival

Martyna Majok's moving and impassioned investigation of human connection and life in an increasingly inaccessible world has its Australian premiere. Featuring and co-directed by Dan Daw (*The Dan Daw Show*), this brand new production will also feature Kate Hood (*Escaped Alone and What If Only*) and Olivier Award-winning Philip Quast (*Do not go gentle...*).

Nominated for four Tony Awards for its smash-hit run on Broadway, and the winner of the 2018 Pulitzer Prize for Drama, *Cost of Living* follows the development of two relationships. Ani, who became quadriplegic after a serious car accident, reconnects with her estranged husband Eddie who is battling feelings of guilt and loneliness. John, a wealthy Princeton student with cerebral palsy, hires Jess, a woman juggling multiple jobs just to stay afloat, as his carer.

In a series of intriguing and stirring vignettes, Majok carefully teases out the nuanced power dynamics, pathos and humour of these characters' lives, whilst also painting a vivid portrait of austerity in the twenty-first century.

Daw joins forces with co-director Priscilla Jackman, the directorial mind behind 2022's smash hit *RBG: Of Many, One*, to bring you one of the best pieces of new writing to emerge from the US in the last decade. At once urgently contemporary and timeless in its humanity, *Cost of Living* is an essential theatrical experience, not to be missed.

18 JUL – 18 AUG | WHARF 1 THEATRE

CO-PRODUCER

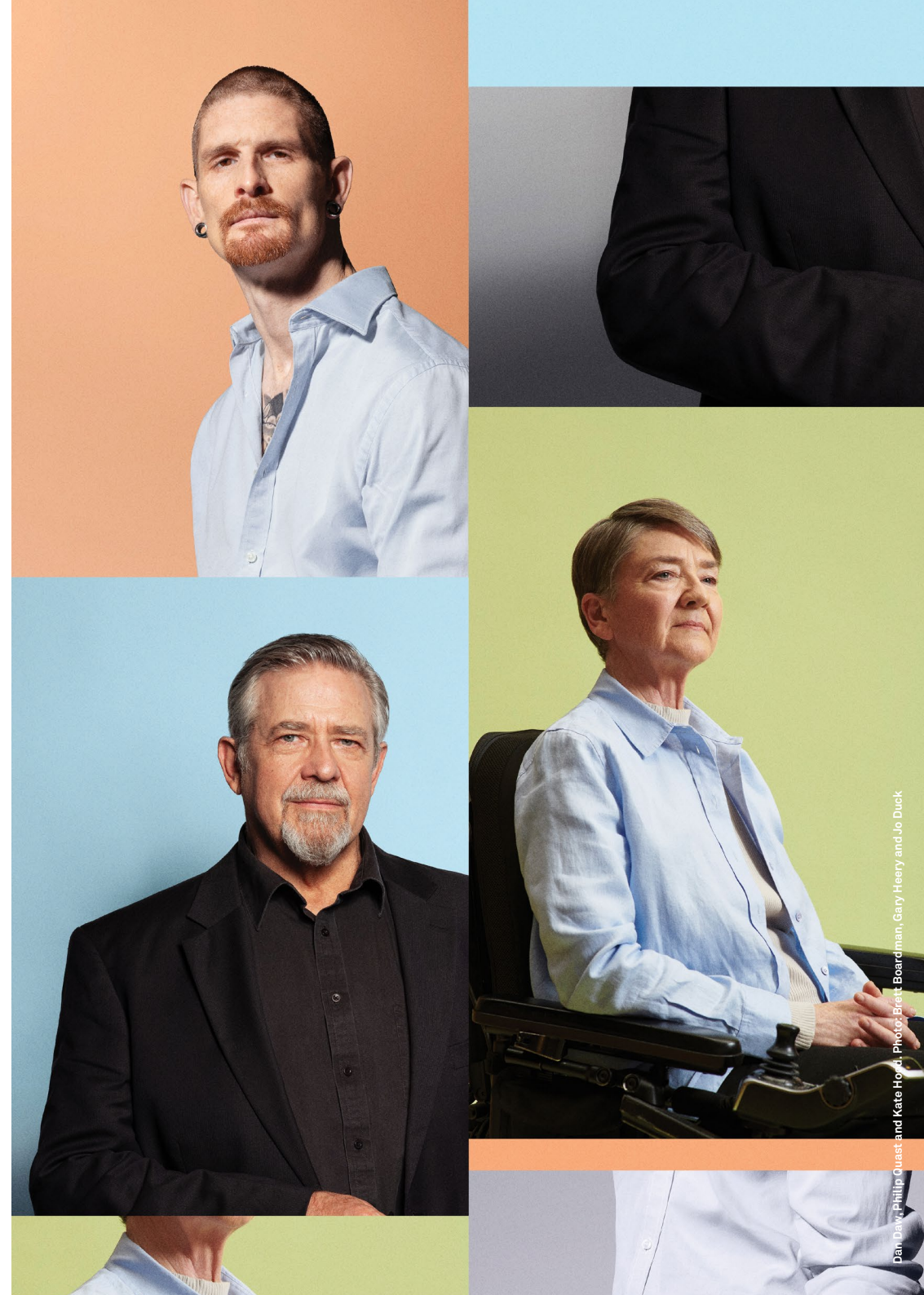
QUEENSLAND
THEATRE

APPROX. DURATION

1 hr 50 mins
no interval

CONTENT

Frequent strong language, nudity and smoking



Dan Daw, Philip Quast and Kate Hood. Photo: Brett Boardman, Gary Heery and Jo Duck

JULIA

BY JOANNA MURRAY-SMITH
DIRECTED BY SARAH GOODES
ENCORE SEASON

Designer

Renée Mulder

Lighting Designer

Alexander Berlage

Composer &

Sound Designer

Steve Francis

Video Designer

Susie Henderson

With

Jessica Bentley

Justine Clarke

INSIGHT EVENTS

Night with the Artists

Mon 16 Sep, post-show

This play is a fictional imagining by the playwright, of true events in the life of Julia Gillard. It combines references to true events, extracts from published works, interviews, fictitious commentary and opinions which the Playwright and the Producers believe to be honestly held. Ms Gillard has not endorsed or read, nor had any artistic input into the production of, this play.

Supported by STC Angels. Original production was the recipient of the Blake Beckett Trust Female Playwrights' and Female Directors' Award

CO-PRODUCER

CANBERRA
THEATRE
CENTRE

Not now, not ever

Run, don't walk, to secure tickets to the special encore season of one of 2023's greatest theatrical experiences. The brilliantly talented Justine Clarke returns to step into the shoes of Australia's first female prime minister and deliver an exhilarating performance that will be remembered for generations.

In 2012, Julia Gillard gave a speech that sent shockwaves around the world. Now, over a decade later, a group of Australia's finest theatre makers – Playwright Joanna Murray-Smith, Director Sarah Goodes, Designer Renée Mulder, and an outstanding creative team, along with Clarke and exciting newcomer Jessica Bentley – have created a stirring and inspiring re-examination of that moment and a revelatory portrait of the woman who made it all happen.

Julia is both a compelling insight into the person behind the public mask, and a reflection on the experience of women in contemporary politics. In a thrilling coming together of history and art, Murray-Smith's incredible dramatic imagination has rendered a powerful monologue that takes us through key moments in Prime Minister Gillard's life, culminating in an "electrifying" (*The Guardian*) verbatim performance of the 'misogyny speech'.

Showered with critical adoration and a sell-out season in 2023, *Julia* remains one of the hottest tickets in town for any theatregoer interested in spectacular acting, first-rate directing, the state of Australian politics, or the stirring story of one woman who changed history.

5 SEP – 12 OCT | DRAMA THEATRE, SYDNEY OPERA HOUSE

APPROX. DURATION

90 mins
no interval

CONTENT

Strong language and strobe lighting



GOLDEN BLOOD

黄金血液

BY MERLYNN TONG
DIRECTED BY TESSA LEONG

Designer
Michael Hankin
Lighting Designer
Fausto Brusamolino
**Composer &
Sound Designer**
Rainbow Chan

With
Merlynn Tong
Charles Wu

INSIGHT EVENTS
Night with the Artists
Tue 1 Oct, post-show

Commissioned through Melbourne Theatre Company's NEXT STAGE Writers' Program, with the support of their Playwrights Giving Circle. Developed through the NEXT STAGE Writers' Program, Cybec Electric Play Reading Series and Griffin Theatre Company.

"I will take care of you, forever..."

Two orphans find their own way into adulthood in this moving, high-octane, and often hilarious coming-of-age drama, set amongst the steamy, tropical backstreets of Singapore's criminal underworld.

Following a celebrated premiere season at Griffin Theatre Company, this transfer production of *Golden Blood* is the Sydney Theatre Company playwriting debut of Merlynn Tong, and a family story that is somehow both sweeping and intimate – partly inspired by events in Tong's own life.

In a once-grand apartment, two estranged siblings – 14-year-old Girl (played by Tong) and 21-year-old Boy (Charles Wu) – are thrown back together after the unexpected death of their mother. The naïve but headstrong Girl elects Boy as her legal guardian. The only problem is that Boy is a fledgling gangster. The audience watches rapt as this unconventional family grows up, gets entangled in a darkly glamorous world of crime and luxury, and comes to confront the ghosts of their past.

Expertly directed by Tessa Leong, *Golden Blood* crackles brightly with mile-a-minute dialogue, sharply drawn characters, and a glittering portrait of a little-known world. Don't miss the opportunity to experience Tong's thrilling voice as she emerges as a major force in the Australian playwriting landscape with this gripping tale about finding home in the big city.

13 SEP – 13 OCT | WHARF 1 THEATRE

APPROX. DURATION
90 mins
no interval

CONTENT
Strong language, adult themes,
drug use and references to suicide



Charles Wu and Merlynn Tong. Photo: Rene Valle

DEAR EVAN HANSEN

BOOK BY STEVEN LEVENSON; MUSIC AND LYRICS BY BENJ PASEK & JUSTIN PAUL
DIRECTED BY DEAN BRYANT

AUSTRALIAN PREMIERE

A SYDNEY THEATRE COMPANY AND MICHAEL CASSEL GROUP PRODUCTION

Set Designer

Jeremy Allen

Lighting Designer

Matt Scott

INSIGHT EVENTS

Night with the Artists

Tue 22 Oct, post-show

Licensed exclusively by
Music Theatre International
(Australasia).

The Tony Award-winning sensation has its Australian premiere

Sydney Theatre Company and Michael Cassel Group, the company that brought *Hamilton* and *Harry Potter and the Cursed Child* to our shores, join forces for the Australian premiere of this radiant Broadway musical sensation.

Dear Evan Hansen is the raw, moving and inspiring story of a socially anxious highschooler who is suddenly thrust into the spotlight when he inadvertently invents an important role for himself at the centre of a local tragedy.

Called a “breathtaking knockout of a musical” by *The New York Times* and the winner of six Tony Awards, including Best Book by writer Steven Levenson, *Dear Evan Hansen* features music from the Grammy and Academy Award-winning geniuses Benj Pasek and Justin Paul (*La La Land*, *The Greatest Showman*) and a story that journeys to the heart of the contemporary teenage condition with a tenderness and wit that will set your heart alight.

In a brand-new production helmed by one of Australia’s great interpreters of musical theatre, Dean Bryant (*Fun Home*, *Hubris & Humiliation*), *Dear Evan Hansen* is an empowering and uplifting experience for anyone who’s ever considered themselves on the “outside, always looking in”.

12 OCT – 17 NOV | ROSLYN PACKER THEATRE

APPROX. DURATION

2 hrs 30 mins
including interval

CONTENT

Suicide and strong language

CO-PRODUCER

michael
cassel
group



Photo: Daniel Boud

SUNDAY

BY ANTHONY WEIGH
DIRECTED BY SARAH GOODES

Set Designer

Anna Cordingley

Costume Designer

Harriet Oxley

Lighting Designer

Paul Jackson

**Composer &
Sound Designer**

Jethro Woodward

Assistant Director

Sonya Soares

With

Matt Day

Ratidzo Mambo

Josh McConville

Nikki Shiels

INSIGHT EVENTS

Night with the Artists

Mon 11 Nov, post-show

Sunday was commissioned by Melbourne Theatre Company with the support of the Joan and Peter Clemenger Trust and originally presented with the support of the *Sunday* Production Patrons.

Restart Investment to Sustain and Expand (RISE) Fund – an Australian Government initiative



**MELBOURNE
THEATRE COMPANY**

“A world class production” *The Guardian*

After a sellout, rave-reviewed season in Melbourne, this lush, romantic, and transporting portrait of an Australian icon – the irrepressible Sunday Reed – is having its Sydney premiere. Described as a “brilliantly realised ode to some of the most important figures in modern Australian art” (*Limelight*), *Sunday* is an instant classic.

Written by the acclaimed playwright Anthony Weigh, *Sunday* is inspired by the stories and myths of the Heide Circle – the renowned group of friends, lovers, and rivals that produced some of this country’s most beloved visual artists, including Albert Tucker and Joy Hester. It is also the story of the torrid and passionate affair between Reed – played by Nikki Shiels (*The Picture of Dorian Gray*) – and the Circle’s most famous member, Sidney Nolan, played by Josh McConville (*Do not go gentle...*).

Beautifully directed by Sarah Goodes (*Julia*), this grand, Melbourne Theatre Company production is a gorgeous collision of love, politics, history and art. And, just like its magnetic, unconventional and audacious protagonist, *Sunday* is enchanting.

28 OCT – 7 DEC | DRAMA THEATRE, SYDNEY OPERA HOUSE

APPROX. DURATION

2 hrs 45 mins
including interval

CONTENT

Strong language, sexual references,
nudity, dynamic sound, herbal cigarettes
and theatrical haze



Nikki Shiels. Photo: Jo Duck

SWEAT

BY LYNN NOTTAGE
DIRECTED BY SHARI SEBBENS
AUSTRALIAN PREMIERE

Designer
Jeremy Allen
Lighting Designer
Verity Hampson
**Composer &
Sound Designer**
Brendon Boney

With
Paula Arundell
Lisa McCune

INSIGHT EVENTS
Night with the Artists
Mon 18 Nov, post-show

Blood, sweat and explosive drama

Lynn Nottage is the superstar writer of two Pulitzer Prize-winning plays and, in 2023, became America's most produced living playwright. In 2024, Sydney Theatre Company will mount the Australian premiere of her second Pulitzer winner *Sweat*, the critically acclaimed slice-of-life masterpiece, starring Australian acting icons Paula Arundell and Lisa McCune.

Set in Reading, Pennsylvania, *Sweat* tells the story of a group of factory workers trying to keep their heads above water as the American steel industry collapses around them. At the centre of this group are Tracy, Cynthia and Jessie – three old friends who've seen each other through everything; births, deaths, marriages and a single workplace for their entire adult lives. When Tracy (McCune) and Cynthia (Arundell) go for the same, long-fought-for promotion, deeply buried tensions begin to boil over into a compelling and touching drama.

Since its premiere, *Sweat* has captured audience imaginations in extended runs on both Broadway and the West End. In this new production, STC Resident Director Shari Sebbens (*Fences*) will create a moving, and absorbing piece featuring a cast of eight incredible actors. Don't miss your chance to experience this landmark of new American theatre in the intimacy of The Wharf.

11 NOV – 15 DEC | WHARF 1 THEATRE

APPROX. DURATION
2 hrs 20 mins
including interval

CONTENT
Frequent strong language, racist and ableist language, drug use, violence and smoking



Paula Arundell and Lisa McCune. Photo: Rene Valle

AMERICAN SIGNS

BY ANCHULI FELICIA KING
DIRECTED BY KENNETH MORALEDA
WORLD PREMIERE

SPECIAL ADD-ON

Designer
James Lew
Lighting Designer
Benjamin Brockman

With
Catherine Vän-Davies

INSIGHT EVENTS
Night with the Artists
Tue 25 Jun, post-show

Bright lights, big city

The remarkable Catherine Vän-Davies (*Constellations*) stars in this electrifying one-performer show that delves deep into the mess of corporate America and lays bare the brutal truth of what it means to 'climb the ladder'.

In the high-powered and super competitive offices of a top-tier management consultancy firm, our unnamed protagonist is struggling to stand out. Unlike many of her colleagues, she doesn't descend from money, nor does she find the long hours and crushing workload a breeze, like the others seem to. She also happens to be running from a dark past. When an opportunity to prove her mettle and escape the office arrives, in the form of a distractingly handsome (and married) senior partner, she jumps at the chance.

In *American Signs*, playwright Anchuli Felicia King (*The Poison of Polygamy*) delivers a scorching and contemporary work that will have you simultaneously moved and hanging from the edge of your seat. Darkly comic, raw and daring, *American Signs* is an impeccably written portrait of a complex character and an opportunity to see some of this country's most exciting young theatre-makers at the top of their game.

15 JUN – 14 JUL | WHARF 2 THEATRE

APPROX. DURATION
60 mins
no interval

CONTENT
Strong language, drug use and adult themes



Catherine Vän-Davies. Photo: Rene Valle

CICADA

ADAPTED FROM *CICADA* BY SHAUN TAN
BY ARIELLE GRAY, LUKE KERRIDGE & TIM WATTS
DIRECTED BY LUKE KERRIDGE

SPECIAL ADD-ON

Designer
Tyler Hill
Lighting Designer
Chloe Ogilvie

Composer
Jonathon Jie Hong Yang
Sound Designer
Tim Collins

Video Designer
Tim Watts

With
Arielle Gray
Tim Watts

Produced by arrangement
with Passion Australia | Highly
Spirited Pty Ltd.

A moving tale of self-discovery for all the family

"Cicada tell story. Story good. Story simple. Story even human can understand. Tok! Tok! Tok!"

Cicada spends his days dutifully working away in a grey office. Overlooked by his superiors and overworked by his colleagues, he is getting very close to the end of his tether. But one day, looking out over the city from the rooftop of his office building, Cicada has an epiphany.

Winner of the Children's Book Council Award for Best Picture Book in 2019, this new adaptation brings master-storyteller Shaun Tan's much-loved *CICADA* to life in a stunning puppet show, presented by Sydney Theatre Company and created by one of Australia's premier children's theatre companies – Barking Gecko Theatre.

A small story of epic proportions, *Cicada* is an allegory of difference, resilience and the light we all have inside ourselves. Children and adults will love this enchanting tale about finding one's place in the world.

18 SEP – 13 OCT | WHARF 2 THEATRE

APPROX. DURATION
55 mins
no interval

CONTENT
Haze effects and flashing lights
Suitable for ages 8+



Image & Text reproduced with permission from *CICADA* by Shaun Tan, Hachette Australia, 2018.



GOVERNMENT PARTNERS

Government of Western Australia
Department of Local Government, Sport and Cultural Industries
Department of Primary Industries and Regional Development

EXCITING NEW CHANGES TO SEASON TICKETS

Gather your nearest and dearest and plan a year of theatre together with a 2024 Season Ticket. Season Ticket Holders get early access to the best available seats alongside a range of other benefits.

This year, we've made some exciting changes to our Season Ticket packages. Be rewarded for being part of our theatre community with bigger discounts on tickets, the more plays you see.



Platinum and Gold Season Tickets get earlier access to the best available seats and extra benefits

PLATINUM

Book 10 – 13 plays

Save 20%*

GOLD

Book 6 – 9 plays

Save 15%*

SILVER

Book 3 – 5 plays

Save 10%*

**WANT MORE INFO
ON YOUR 2024 SEASON
TICKET SAVINGS?**

For more information on choosing the Season Ticket that best fits your needs visit sydneytheatre.com.au/2024

SEASON TICKET HOLDER BENEFITS

BE FIRST IN LINE FOR THE BEST AVAILABLE SEATS

Snap up the best available seats before they go on sale to everyone else. Existing Season Ticket Holders can book a Platinum (10 – 13 plays) or Gold (6 – 9 plays) Season Ticket in the priority renewal window from Tue 19 Sep. New Platinum and Gold Season Tickets can be booked from Wed 11 Oct or a Silver (3 – 5 plays) Season Ticket from Tue 31 Oct.

GET UNLIMITED FREE EXCHANGES

Lock in your Season Ticket with the knowledge that you can swap to another date of the same show, fee-free, if plans change. Subject to availability, some conditions apply.

EXTRA REWARDS

Season Ticket Holders get access to discounts and offers throughout the year, plus a range of exclusive competitions in our monthly newsletter. Stars and Legends get extra special benefits for being long-term Season Ticket Holders of three or more years. Find out more at sydneytheatre.com.au/benefits

NO FEES

Enjoy even more savings with no transaction fees on your Season Ticket booking.

SPLIT THE COST OVER TWO PAYMENTS

Season Ticket Holders booking a Platinum (10 – 13 plays) or Gold (6 – 9 plays) Season Ticket before Sun 31 Dec can split the cost across two payments.

Not available on web bookings. Some conditions and fees apply. Visit the website for more details.

GET A FREE TICKET*

Book all 13 shows in the main season by Sun 31 Dec and we'll throw in a free ticket to a main season show of your choice!

* Complimentary tickets need to be requested by Sun 31 Dec. Subject to availability

PREMIUM SEATS FOR LEGENDS

Our newly introduced Premium reserve is a selection of the most popular seats. Legend Season Ticket Holders of ten or more years get access to a special allocation of Premium reserve during the priority renewal window.

SEASON TICKET PRICES

Lock in your seats early and enjoy great savings on full-price tickets with a 2024 Season Ticket of 3 – 13 plays. Plus enjoy access to a full suite of benefits.

Discounts not available on preview performances.

STEP 1. SELECT YOUR ZONE AND DAY (This is the base price before concessions or your Season Ticket discount)					
PLAY	ZONE	MON – THU	FRI & SAT EVE	SAT MATINEE & SUN	PREVIEW
Dear Evan Hansen	Premium	\$155	\$170	\$170	\$99
	A-Reserve	\$140	\$155	\$155	\$79
The President Dracula	Premium	\$140	\$155	\$155	\$78
	A-Reserve	\$125	\$140	\$140	\$70
RBG: Of Many, One Julia Sunday	Premium	\$125	\$140	\$140	\$70
	A-Reserve	\$115	\$125	\$125	\$65
A Fool in Love No Pay? No Way! Into the Shimmering World Stolen Cost of Living Golden Blood Sweat	Premium	\$115	\$125	\$125	\$63
	A-Reserve	\$105	\$115	\$115	\$55
STEP 2. LESS YOUR CONCESSION PER TICKET*					
Seniors		Save \$5		Save \$5	
Student/Concessions		Save \$30		Save \$30	
Under 30s		Save \$50		Save \$50	
STEP 3. LESS YOUR SEASON TICKET DISCOUNT^					
Platinum (10 – 13 plays)			Save 20%		
Gold (6 – 9 plays)			Save 15%		
Silver (3 – 5 plays)			Save 10%		

+Prices are correct at the time of publication and subject to change.

* If applicable. Subject to availability concession discount available for all performances except preview, Friday and Saturday evening.

^ Season Ticket discount not available for Preview performances

SPECIAL ADD-ONS

Enjoy even more theatre with a Special Add-On! Add-Ons don't count towards your Season Ticket, but can be added to your order.

PLAY	ZONE	TUE – THU	FRI & SAT EVE	SAT MATINEE & SUN	PREVIEW
American Signs		\$75		\$85	
	Student/Concessions/U30	\$55	\$85	\$55	\$43
Cicada	A-Reserve	\$49	\$49	\$49	N/A

BOOK YOUR 2024 SEASON TICKET

ONLINE

For the fastest way to secure your seats, jump online to select your own seats and confirm your booking on the spot. Book online at sydneytheatre.com.au/2024

BOOKING FORMS

For more complex bookings or access requirements, download a booking form on our website and email it to season@sydneytheatre.com.au

Booking forms can also be posted to:

Sydney Theatre Company
2024 Season Tickets
Reply Paid 85302
Strawberry Hills NSW 2012

Please note that emailed and mailed booking forms will be processed in order of receipt.

We encourage posting your booking form ASAP. Renewing Season Tickets will be processed from Tue 19 Sep; new Season Tickets will be processed from Wed 11 Oct.

BRING THE GANG

Get your friends together! To book for a large group of people, head to sydneytheatre.com.au/2024 to download a group booking form and email it to season@sydneytheatre.com.au or post it to the address above.

CONCESSION TICKETS

Discounted Season Tickets are available for those with an Australian Seniors Card (excluding Senior Savers Cards), Pensioner Concession Card (excluding Health Care Cards), Veteran Cards, current Full Time Student Card, or valid proof-of-age identification (for Under 30s tickets), for all performances except preview, Friday and Saturday evening performances.

ADD A SOUVENIR PROGRAM

Add a program voucher to your Season Ticket booking for \$10. Program vouchers are available for all productions except *Dear Evan Hansen*.

DATES FOR YOUR CALENDAR

THU 14 SEP

2024 Season launch.

9AM TUE 19 SEP – MON 9 OCT

Platinum (10 – 13 plays) and Gold (6 – 9 plays) priority renewal window for renewing Season Ticket Holders starts at 9am Tue 19 Sep.

9AM WED 11 OCT

Platinum (10 – 13 plays) and Gold (6 – 9 plays) Season Tickets go on sale to everyone.

9AM FRI 27 OCT

Season Ticket Holders can buy additional tickets and exchange, fee-free.

9AM TUE 31 OCT

Silver (3 – 5 plays) Season Tickets go on sale to everyone.

9AM THU 7 DEC

Single tickets go on sale at 9am for *A Fool in Love*; *RBG: Of Many, One*; *Into the Shimmering World*; *No Pay? No Way!*; *The President*; *Stolen*; *American Signs* and *Dear Evan Hansen*.

Tickets for Pier Group events go on sale.

SUN 31 DEC

Book all 13 plays in the main season before Sun 31 Dec and receive a free ticket to a play of your choice.*

9AM THU 8 FEB 2024

Single tickets go on sale at 9am for *Dracula*; *Cost of Living*; *Julia*; *Golden Blood*; *Sunday*; *Sweat* and *Cicada*.

* Complimentary tickets must be requested before Sun 31 Dec. Subject to availability.

SHOW ME SOMETHING WHERE...

Mix and match 3 or more plays to curate your perfect Season Ticket

NEW AUSTRALIAN WORK MEETS THE STAGE

A Fool in Love
Into the Shimmering World
Dracula
American Signs

BIG NIGHT OUT MEETS BIGGER CHARACTERS

A Fool in Love
No Pay? No Way!
Dear Evan Hansen
Sunday

POWERFUL DRAMA MEETS POIGNANT MOMENTS

Into the Shimmering World
The President
Stolen
Dracula
Cost of Living
Golden Blood
Sunday
Sweat

GLOBAL SENSATIONS MEET AUSSIE AUDIENCES

The President
Cost of Living
Dear Evan Hansen
Sweat

FAMILIAR FAVOURITES MEET FRESH PERSPECTIVES

RBG: Of Many, One
Stolen
Dracula
Julia
Sunday
Cicada

SHORT'N'SWEET MEETS LASTING IMPRESSIONS

Into the Shimmering World
Stolen
Julia
Golden Blood
American Signs
Cicada

WANT MORE RECOMMENDATIONS?

Explore the season online to make your selection and curate your Season Ticket at sydneytheatre.com.au/2024

WHERE ART MEETS THE AUDIENCE

COMMUNITY EVENTS

Look out for our Community events where we invite people to engage more deeply with the production through activations such as yarnning circles, spoken word events, live music and more. These are fun and free events.



Fences Night with the Artists.
Photo: Prudence Upton

NIGHT WITH THE ARTISTS

After the show, stay for an engaging talk with the cast and creatives as we unpack the themes and the making of the production. Night with the Artists happens on select performances.

Dates for our 2024 Night with the Artists events are listed on the play pages (from p. 4) and on the calendar (p. 46 – 51).

PIER GROUP EVENTS

Join us at one of our Pier Group events to hear from the cast and creative team over delicious food and wine. You'll learn more about the show, hear how rehearsals are going and gain an invaluable insight into the creative process.

Tickets to Pier Group events go on sale Thu 7 Dec 2023. To book or find out more, visit sydneytheatre.com.au/insightevents

DINNER AND A SHOW

Enjoy spectacular views, good food and great company with our pre- and post-show dining options.



Photo: Juan Gordillo



Photo: Rene Vaile

THE THEATRE BAR AT THE END OF THE WHARF

Soak up the pre-show buzz and breathtaking Sydney Harbour views from our own hidden gem, The Theatre Bar at the End of the Wharf. Take in a delicious meal from the seasonal menu before you head into The Wharf Theatres, or simply drop in to enjoy a drink with friends on the balcony.

For more information, visit sydneytheatre.com.au/thebar

WALSH BAY KITCHEN

Right next door to Roslyn Packer Theatre, enjoy a pre- or post-show meal at Walsh Bay Kitchen perfectly timed for your theatre experience. The essential accompaniment to a night out at Sydney Theatre Company, with special offers for Stars and Legends, book ahead to secure your table for your next show.

To book, call 1300 368 801 or visit sydneytheatre.com.au/walshbaykitchen

WHERE NEW IDEAS BECOME FUTURE CLASSICS

SPOTLIGHT ON NEW AUSTRALIAN WORK

Sydney Theatre Company has a proud history as an incubator of new artistic talent, both locally and internationally. In our 2024 Season, seven out of the fifteen plays have been either commissioned by the Company or supported by our New Work department on their way to opening night. We are thrilled to welcome four brand new Australian works to the stage this year; including an adaptation of *La dama boba* by Lope de Vega in Van Badham's *A Fool in Love*, *Into the Shimmering World* by Angus Cerini and *American Signs* by Anchuli Felicia King. Following the sensational productions *The Picture of Dorian Gray* and *Strange Case of Dr Jekyll and Mr Hyde*, Artistic Director Kip Williams will complete his gothic cine-theatre trilogy with a hugely anticipated new adaptation of *Dracula* by Bram Stoker. The Company is also committed to ensuring that new Australian plays have a long life beyond their premiere



Paige Rattray, Ruth Little, Jonathan Ware and Jules Orcullo
Photo: Daniel Boud

seasons. Accordingly, we are mounting special encore seasons of three previous Sydney Theatre Company commissions in 2024: Suzie Miller's *RBG: Of Many, One; No Pay? No Way!* by Dario Fo and Franca Rame, adapted by Marieke Hardy; and *Julia* by Joanna Murray-Smith. We are grateful to our community of donors and government partners, whose generosity and enthusiasm for home-grown talent makes these productions, and so many others, possible.

DEVELOPING THE FUTURE OF THEATRE

Our investment in the future of artists and new creative work is spearheaded by our New Work team. Director of New Work and Artistic Development Paige Rattray is joined by Ruth Little, Associate Artist of New Work, Jules Orcullo, Dramaturg, and Jonathan Ware, New Work Development Producer, to oversee all of the new writing at the Company.

In 2023 we announced Wesley Enoch as the Patrick White Playwrights Fellow, a year-long position that provides a writer the opportunity to deepen their relationship with the Company, and a commission to write a new play. 2024 will also see the premiere year of STC's new writing program, Watershed: Writers. The program will foster the career progression of the next generation of Australian playwrights, providing opportunities for the writers to explore their craft and creativity over a two-year period with the Company. Announced in 2023, the



Wesley Enoch, Patrick White Playwrights Fellow
Photo: Daniel Boud

Watershed: Writers group is made up of: Grace Chapple, Abbie-lee Lewis, Emmanuelle Mattana, Gary Paramanathan and Daley Rangi. Watershed: Writers is supported by the Copyright Agency's Cultural Fund.

COPYRIGHT AGENCY
CULTURAL FUND

“New Australian work is at the very centre of what we do here at Sydney Theatre Company. We could not be prouder of all the wonderful new plays that we have the privilege of helping reach the stage...”

KIP WILLIAMS

Artistic Director & Co-CEO

WHERE CREATIVITY MEETS LEARNING



Photo: Rebecca Hitch

Sydney Theatre Company offers a host of enriching opportunities for teachers and students across Australia.

Our respected School Drama program, presented in partnership with the University of Sydney, has impacted the lives of thousands of Australian students and teachers. Additionally, our Schools Days provide invaluable insight into STC productions for all ages. With their informative pre- and post-show briefings, and quality teaching resources, teachers and students are given a behind-the-scenes view into the production.

STC's commitment to creativity and learning also extends to supporting Secondary English and Drama teachers with the introduction of bite-sized professional learning modules designed to support our teachers' practice in the classroom. Professor Emerita Robyn Ewing AM, co-creator of STC's renowned School Drama program, says:

"Quality arts processes and experiences should be integral to learning across all curriculum areas. Serious play allows children and young people to understand themselves, explore their worlds, consider others' cultures and perspectives, and imagine alternative possibilities"

"Serious play allows children and young people to understand themselves"

STC's expanding suite of programs support both teachers and students in the classroom to think creatively about the world and the way that they respond to it, either through reading, writing, listening, or speaking.

Explore more at sydneytheatre.com.au/education

For more information contact education@sydneytheatre.com.au



Photo: Clare Hawley

WHERE COMMUNITY MEETS COMPANY

Donors are the building blocks of every STC Season. Your support lays the foundations upon which we can realise our vision, whether it is funding new works or revisiting old favourites.

Donations of all sizes help us employ the artists who will bring the 2024 Season to life. Did you know that 82% of donations we received last year were of \$100 or less?

Please consider including a donation with your Season Ticket booking and joining our donor community. We're assembling another fantastic year of theatre. The missing piece is you.

You can donate via the 2024 Season booking form, online at sydneytheatre.com.au/donate or contact us on 02 9250 1976 or foundation@sydneytheatre.com.au

73.3%
donated
\$2 - \$50

9.3%
donated
\$101 - \$250

2.1%
donated
\$501 - \$1,000

1.1%
donated
\$5,001 - \$10,000

8.7%
donated
\$51 - \$100

0.8%
donated
\$10,001 - \$25,000

0.2%
donated
\$25,001 - \$50,000

0.1%
donated
\$50,001 - \$100,000

0.2%
donated
\$100,000+

2%
donated
\$251 - \$500

2.1% donated
\$1,001 - \$5,000

The missing piece is you

CALENDAR

A Fool in Love
6 FEB – 17 MAR
WHARF 1 THEATRE

RBG: Of Many, One
9 FEB – 23 MAR
DRAMA THEATRE,
SYDNEY OPERA HOUSE

Into the Shimmering World
2 APR – 19 MAY
WHARF 1 THEATRE (EXTENDED)

No Pay? No Way!
6 APR – 11 MAY
DRAMA THEATRE,
SYDNEY OPERA HOUSE

The President
13 APR – 18 MAY
ROSLYN PACKER THEATRE

We're introducing Sunday performances in 2024! Available for select shows, there are now even more opportunities for you to see the theatre you love.

JANUARY

MONDAY	TUESDAY	WEDNESDAY	THURSDAY	FRIDAY	SATURDAY	SUNDAY
1 NEW YEAR'S DAY	2	3	4	5	6	7
8	9	10	11	12	13	14
15	16	17	18	19	20	21
22	23	24	25	26 AUSTRALIA DAY	27	28
29	30	31				

FEBRUARY

MONDAY	TUESDAY	WEDNESDAY	THURSDAY	FRIDAY	SATURDAY	SUNDAY
			1	2	3	4
5 TERM 1 STARTS	6 7.30PM PREVIEW	7 7.30PM PREVIEW	8 7.30PM PREVIEW	9 7.30PM PREVIEW 7.30PM PREVIEW	10 7.30PM PREVIEW	11
12 6.30PM 7.30PM PREVIEW	13 6.30PM	14 1PM, 7.30PM 7.30PM	15 7.30PM 7.30PM	16 7.30PM 7.30PM	17 1.30PM, 7.30PM 1.30PM, 7.30PM	18
19 6.30PM NWA	20 6.30PM NWA 6.30PM	21 7.30PM 1PM, 7.30PM	22 7.30PM 7.30PM	23 7.30PM 7.30PM	24 1.30PM, 7.30PM 1.30PM, 7.30PM	25 5PM
26 6.30PM	27 6.30PM 6.30PM	28 1PM, 7.30PM 11.30AM S, 7.30PM	29 7.30PM 47			

MARCH

MONDAY	TUESDAY	WEDNESDAY	THURSDAY	FRIDAY	SATURDAY	SUNDAY
				1 7.30PM 7.30PM	2 1.30PM OC, 7.30PM 1.30PM, 7.30PM	3 5PM
4 6.30PM	5 6.30PM OC 6.30PM	6 7.30PM 1PM, 7.30PM	7 7.30PM 7.30PM	8 7.30PM 7.30PM	9 1.30PM OC, 7.30PM 1.30PM, 7.30PM	10 5PM
11 6.30PM	12 6.30PM 6.30PM	13 7.30PM 7.30PM	14 7.30PM 7.30PM 47	15 7.30PM 7.30PM	16 1.30PM, 7.30PM 1.30PM, 7.30PM	17 5PM
18 6.30PM	19 6.30PM OC	20 7.30PM	21 7.30PM	22 7.30PM	23 1.30PM OC, 7.30PM	24
25	26	27	28	29 GOOD FRIDAY	30 EASTER SATURDAY	31 EASTER SUNDAY

APRIL

MONDAY	TUESDAY	WEDNESDAY	THURSDAY	FRIDAY	SATURDAY	SUNDAY
1	2 7.30PM PREVIEW	3 7.30PM PREVIEW	4 7.30PM PREVIEW	5 7.30PM PREVIEW	6 7.30PM PREVIEW	7
EASTER MONDAY						
8 6.30PM 7.30PM PREVIEW	9 6.30PM 7.30PM PREVIEW	10 1PM, 7.30PM	11 7.30PM 7.30PM	12 7.30PM 7.30PM	13 1.30PM, 7.30PM 1.30PM, 7.30PM 7.30PM PREVIEW	14
15 6.30PM NWA 7.30PM PREVIEW	16 6.30PM 7.30PM PREVIEW	17 1PM, 7.30PM 1PM, 7.30PM	18 7.30PM 7.30PM 7.30PM	19 7.30PM 7.30PM	20 1.30PM, 7.30PM 1.30PM, 7.30PM	21 5PM
SCHOOL HOLIDAYS						
22 6.30PM 6.30PM NWA	23 6.30PM NWA 6.30PM	24 7.30PM 1PM, 7.30PM 1PM, 7.30PM	25 7.30PM 7.30PM 7.30PM	26 7.30PM 7.30PM	27 1.30PM, 7.30PM 1.30PM, 7.30PM	28 5PM
29			ANZAC DAY			
TERM 2 STARTS	30 6.30PM AD 6.30PM 6.30PM					

Into the Shimmering World
2 APR – 19 MAY
WHARF 1 THEATRE (EXTENDED)

No Pay? No Way!
6 APR – 11 MAY
DRAMA THEATRE,
SYDNEY OPERA HOUSE

The President
13 APR – 18 MAY
ROSLYN PACKER THEATRE

Stolen
6 JUN – 6 JUL
WHARF 1 THEATRE

American Signs
15 JUN – 14 JUL
WHARF 2 THEATRE

Dracula
2 JUL – 4 AUG
ROSLYN PACKER THEATRE

Cost of Living
18 JUL – 18 AUG
WHARF 1 THEATRE

MAY

MONDAY	TUESDAY	WEDNESDAY	THURSDAY	FRIDAY	SATURDAY	SUNDAY
		1 7.30PM 7.30PM 1PM, 7.30PM	2 7.30PM 7.30PM 7.30PM	3 7.30PM	4 1.30PM, 7.30PM 1.30PM, 7.30PM 1.30PM, 7.30PM	5 5PM 5PM
6 6.30PM	7 6.30PM 6.30PM OC 6.30PM	8 7.30PM 11.30AM S, 7.30PM 7.30PM	9 7.30PM 7.30PM 7.30PM	10 7.30PM 7.30PM 7.30PM	11 1.30PM, 7.30PM 1.30PM OC, 7.30PM 1.30PM AD, 7.30PM	12 5PM 5PM
13	14 6.30PM 6.30PM OC	15 7.30PM 7.30PM	16 7.30PM 7.30PM	17 7.30PM 7.30PM	18 1.30PM, 7.30PM 1.30PM OC, 7.30PM	19 5PM
20	21	22	23	24	25	26
27	28	29	30	31		

JUNE

MONDAY	TUESDAY	WEDNESDAY	THURSDAY	FRIDAY	SATURDAY	SUNDAY
					1	2
3	4	5	6 8PM PREVIEW	7 8PM PREVIEW	8 8PM PREVIEW	9
10 8PM PREVIEW	11	12	13 8PM	14 8PM	15 2.30PM, 8PM 6.30PM PREVIEW	16 6.30PM PREVIEW
KING'S BIRTHDAY						
17	18 11.30AM S 6.30PM PREVIEW	19 11.30AM S	20 8PM 6.30PM	21 8PM 6.30PM	22 2.30PM, 8PM 1PM, 6.30PM	23 5PM 3.30PM
24	25 11.30AM S 6.30PM N/A	26 1PM, 8PM 6.30PM	27 8PM N/A 1PM, 6.30PM	28 8PM 6.30PM	29 2.30PM AD, 8PM 1PM, 6.30PM	30 5PM 3.30PM

JULY

MONDAY	TUESDAY	WEDNESDAY	THURSDAY	FRIDAY	SATURDAY	SUNDAY
1	2 11.30AM S 6.30PM 7.30PM PREVIEW	3 1PM, 8PM 6.30PM 7.30PM PREVIEW	4 8PM 1PM, 6.30PM 7.30PM PREVIEW	5 8PM 6.30PM 7.30PM PREVIEW	6 2.30PM, 8PM 1PM, 6.30PM	7 3.30PM
8 6.30PM	9 6.30PM	10 6.30PM 1PM, 7.30PM	11 6.30PM 7.30PM	12 6.30PM 7.30PM	13 1PM, 6.30PM 1.30PM, 7.30PM	14 3.30PM
SCHOOL HOLIDAYS						
15	16 6.30PM	17 1PM, 7.30PM	18 7.30PM 7.30PM PREVIEW	19 7.30PM	20 1.30PM, 7.30PM 7.30PM	21 5PM
22	23 6.30PM N/A 6.30PM	24 7.30PM 1PM, 7.30PM	25 7.30PM 7.30PM	26 7.30PM	27 1.30PM, 7.30PM 1.30PM, 7.30PM	28 5PM
TERM 3 STARTS						
29	30 6.30PM OC 6.30PM N/A	31 11.30AM S, 7.30PM 7.30PM				

AUGUST

MONDAY	TUESDAY	WEDNESDAY	THURSDAY	FRIDAY	SATURDAY	SUNDAY
			1 7.30PM 7.30PM	2 7.30PM 7.30PM	3 1.30PM OC, 7.30PM 1.30PM, 7.30PM	4 5PM 5PM
5	6 6.30PM AD	7 7.30PM	8 7.30PM 6.30PM	9 7.30PM	10 1.30PM, 7.30PM	11 5PM
12	13 6.30PM OC	14 7.30PM	15 7.30PM	16 7.30PM	17 1.30PM OC, 7.30PM	18 5PM
19	20	21	22	23	24	25
26	27	28	29	30	31	

Julia
5 SEP – 12 OCT
DRAMA THEATRE,
SYDNEY OPERA HOUSE

Golden Blood
13 SEP – 13 OCT
WHARF 1 THEATRE

Cicada
18 SEP – 13 OCT
WHARF 2 THEATRE

Dear Evan Hansen
12 OCT – 17 NOV
ROSLYN PACKER THEATRE

Sunday
28 OCT – 7 DEC
DRAMA THEATRE,
SYDNEY OPERA HOUSE

Sweat
11 NOV – 15 DEC
WHARF 1 THEATRE

SEPTEMBER

MONDAY	TUESDAY	WEDNESDAY	THURSDAY	FRIDAY	SATURDAY	SUNDAY
						1
2	3	4	5 7.30PM PREVIEW	6	7 7.30PM	8
9 6.30PM	10 6.30PM	11 11.30AM S , 7.30PM	12 7.30PM	13 7.30PM 7.30PM PREVIEW	14 1.30PM, 7.30PM 7.30PM PREVIEW	15
16 6.30PM NWA 7.30PM PREVIEW	17 6.30PM	18 1PM, 7.30PM 7.30PM 9.30AM S , 12.30PM S	19 7.30PM 7.30PM 9.30AM S , 12.30PM S	20 7.30PM 7.30PM 9.30AM S , 12.30PM S	21 1.30PM, 7.30PM 1.30PM, 7.30PM 10.30AM, 3.30PM	22 10.30AM, 1.30PM
23 6.30PM	24 6.30PM 6.30PM 9.30AM S , 12.30PM S	25 7.30PM 1PM, 7.30PM 10.30AM S	26 7.30PM 7.30PM 9.30AM S , 12.30PM S	27 7.30PM 7.30PM 10.30AM S	28 1.30PM, 7.30PM 1.30PM, 7.30PM 10.30AM, 3.30PM	29 5PM 10.30AM, 1.30PM
30 6.30PM						
SCHOOL HOLIDAYS						

OCTOBER

MONDAY	TUESDAY	WEDNESDAY	THURSDAY	FRIDAY	SATURDAY	SUNDAY
	1 6.30PM OC 6.30PM NWA 10.30AM, 1.30PM	2 1PM, 7.30PM 7.30PM 10.30AM	3 7.30PM 7.30PM 10.30AM, 1.30PM	4 7.30PM 7.30PM 10.30AM, 1.30PM	5 1.30PM OC , 7.30PM 1.30PM, 7.30PM 10.30AM, 3.30PM	6 5PM 10.30AM
7 6.30PM	8 6.30PM OC 6.30PM OC 10.30AM, 1.30PM	9 7.30PM 1PM, 7.30PM 10.30AM	10 7.30PM 7.30PM 10.30AM, 1.30PM	11 7.30PM 7.30PM 10.30AM, 1.30PM	12 1.30PM, 7.30PM 1.30PM OC , 7.30PM 10.30AM, 3.30PM 7.30PM PREVIEW	13 5PM 10.30AM 7.30PM PREVIEW
14	15 7.30PM PREVIEW	16 7.30PM PREVIEW	17 7.30PM PREVIEW	18	19 7.30PM	20 1PM, 6PM
TERM 4 STARTS						
21	22 6.30PM NWA	23 7.30PM	24 7.30PM	25 7.30PM	26 1.30PM, 7.30PM	27 1PM, 6PM
28 7.30PM PREVIEW	29 7.30PM PREVIEW	30 1PM, 7.30PM 7.30PM PREVIEW	31 7.30PM 7.30PM PREVIEW			

NOVEMBER

MONDAY	TUESDAY	WEDNESDAY	THURSDAY	FRIDAY	SATURDAY	SUNDAY
				1 7.30PM	2 1.30PM, 7.30PM 7.30PM	3 1PM, 6PM
4 6.30PM	5 6.30PM	6 1PM, 7.30PM 1PM, 7.30PM	7 7.30PM AD 7.30PM	8 7.30PM 7.30PM	9 1.30PM AD , 7.30PM 1.30PM, 7.30PM	10 1PM, 6PM
11 6.30PM NWA 7.30PM PREVIEW	12 6.30PM OC 6.30PM 7.30PM PREVIEW	13 7.30PM 1PM, 7.30PM 7.30PM PREVIEW	14 7.30PM 7.30PM 7.30PM PREVIEW	15 7.30PM 7.30PM	16 1.30PM OC , 7.30PM 1.30PM, 7.30PM 7.30PM	17 1PM, 6PM
18 6.30PM 6.30PM NWA	19 6.30PM 6.30PM	20 7.30PM 1PM, 7.30PM	21 7.30PM 7.30PM	22 7.30PM 7.30PM	23 1.30PM, 7.30PM 1.30PM, 7.30PM	24
25 6.30PM	26 6.30PM 6.30PM	27 7.30PM 1PM, 7.30PM	28 7.30PM 7.30PM	29 7.30PM 7.30PM	30 1.30PM, 7.30PM 1.30PM, 7.30PM	

DECEMBER

MONDAY	TUESDAY	WEDNESDAY	THURSDAY	FRIDAY	SATURDAY	SUNDAY
						1 5PM
2 6.30PM	3 6.30PM OC 6.30PM AD	4 7.30PM 7.30PM	5 7.30PM 7.30PM AD	6 7.30PM 7.30PM	7 1.30PM OC , 7.30PM 1.30PM, 7.30PM	8 5PM
9	10 6.30PM OC	11 7.30PM	12 7.30PM	13 7.30PM	14 1.30PM OC , 7.30PM	15 5PM
16	17	18	19	20	21	22
23	24	25	26	27	28	29
SCHOOL HOLIDAYS		CHRISTMAS DAY		BOXING DAY		
30	31					

ACCESSIBILITY

Sydney Theatre Company is committed to providing access for all. Hearing-enhancement systems are available in all theatres, and assistance dogs are welcome in all of our venues. Our 2024 Season includes Audio-Described, Captioned, and Auslan-Interpreted performances.

If you'd like to book into one of our accessible performances, and/or have access or seating requirements, including wheelchair access, please complete the booking form available at sydneytheatre.com.au/2024 and email or post it to us so we can select the best seats for your specific requirements. At present, access bookings cannot be made online.

GET IN TOUCH

If you need assistance, you can phone **(02) 9250 1777** to speak to our Box Office.

TTY users: phone **133 677** then ask for **(02) 9250 1777**

Speak and Listen users: phone **1300 555 727** then ask for **(02) 9250 1777**

Internet relay users: connect to the NRS then ask for **(02) 9250 1777**

STC is a proud participant in the Companion Card program. All STC events are part of the Companion Card initiative. Please advise our Box Office at the time of booking if you are a Companion Cardholder or a companion.

ACCESSIBLE PERFORMANCES

AUDIO-DESCRIBED

A Fool in Love
Sat 2 Mar, 1.30pm

Into the Shimmering World
Tue 30 Apr, 6.30pm

The President
Sat 11 May, 1.30pm

Stolen
Sat 29 Jun, 2.30pm

Cost of Living
Tue 6 Aug, 6.30pm

Dear Evan Hansen
Sat 9 Nov, 1.30pm

Sweat
Tue 3 Dec, 6.30pm

AUSLAN-INTERPRETED

A Fool in Love
Thu 29 Feb, 7.30pm

RBG: Of Many, One
Thu 14 Mar, 7.30pm

Into the Shimmering World
Thu 2 May, 7.30pm

The President
Thu 9 May, 7.30pm

Stolen
Thu 4 Jul, 8pm

Dracula
Thu 25 Jul, 7.30pm

Cost of Living
Thu 8 Aug, 7.30pm

Dear Evan Hansen
Thu 7 Nov, 7.30pm

Sweat
Thu 5 Dec, 7.30pm

CAPTIONED

A Fool in Love
Tue 5 Mar, 6.30pm
Sat 9 Mar, 1.30pm

RBG: Of Many, One
Tue 19 Mar, 6.30pm
Sat 23 Mar, 1.30pm

No Pay? No Way!
Tue 7 May, 6.30pm
Sat 11 May, 1.30pm

The President
Tue 14 May, 6.30pm
Sat 18 May, 1.30pm

Dracula
Tue 30 Jul, 6.30pm
Sat 3 Aug, 1.30pm

Cost of Living
Tue 13 Aug, 6.30pm
Sat 17 Aug, 1.30pm

Julia
Tue 1 Oct, 6.30pm
Sat 5 Oct, 1.30pm

Golden Blood
Tue 8 Oct, 6.30pm
Sat 12 Oct, 1.30pm

Dear Evan Hansen
Tue 12 Nov, 6.30pm
Sat 16 Nov, 1.30pm

Sunday
Tue 3 Dec, 6.30pm
Sat 7 Dec, 1.30pm

Sweat
Tue 10 Dec, 6.30pm
Sat 14 Dec, 1.30

OUR PARTNERS

Sydney Theatre Company celebrates the support of our valued Partners.

PRESENTING PARTNERS

Allens >< Linklaters | 200

GOVERNMENT SUPPORT



Sydney Theatre Company is supported by the NSW Government through Create NSW



Sydney Theatre Company is assisted by the Australian Government through the Australia Council, its arts funding and advisory body

ASSOCIATE PARTNERS

Adina



SEASON PARTNERS

ARCHIE ROSE DISTILLING CO.

THE FRESH COLLECTIVE



KAWAI



CORPORATE SUPPORTERS

City of Sydney

Tourism & Transport Forum

For further information on partnership opportunities and corporate entertaining, please contact Miranda Purnell, mpurnell@sydneytheatre.com.au

OUR DONOR COMMUNITY

Thank you STC Angels for your unwavering commitment to our work.

Anita Belgiorno-Nettis AM & Luca Belgiorno-Nettis AM

Jane & Andrew Clifford

Alan Joyce AC & Shane Lloyd

Gretel Packer AM

Rebel Penfold-Russell OAM

Ruth Ritchie

Rosie Williams & John Grill on behalf of the Serpentine Foundation

Thank you to the following community of supporters. Your generosity makes our work possible.

FOUNDATION DIRECTORS

Gretel Packer AM (Chair), Judi Hausmann, Frances Ingham, Shane Lloyd, Justin Miller AM, Tim Minchin AM, Heather Mitchell AM, Ruth Ritchie, Alex Schuman, Mia Wasikowska, Rosie Williams

MAINSTAGE

Lead Donors

Frances Allan & Ian Narev, Mark Coulter & Dr Adam Bayes, David Gonski AC & Orli Wargon OAM, Leon & Simona Kamenev, Anthony & Jacqueline Kerwick, Sally & Geoffrey White

Supporting Patrons

Robert Albert AO & Libby Albert, Deb & John Balderstone, Megan Grace & Brighton Grace, The Kerridge Foundation, W & A Johnson, Anonymous

ARTISTIC DEVELOPMENT

Lead Donors

Blake Beckett Trust, The Donor Syndicate

Supporting Patrons

Michele Brooks & Andrew Michael, Robert Cameron AO & Paula Cameron, Copyright Agency Cultural Fund, Anne & David Craig, The Hansen Family, Malcolm Robertson Foundation

EDUCATION & COMMUNITY

Supporting Patrons

Packer Family Foundation, Education Donor Circle, Rowena Danziger AM, The Kerridge Foundation, Colin Tate AM & Matthew Fatches, Vaux Family Education & Learning Foundation

COMPANY

Lead Donors

Crown Resorts Foundation, Ian Darling AO & Min Darling, Libby & John Fairfax, Packer Family Foundation, The Paradise Family Foundation, Will & Jane Vicars

Supporting Patrons

Ruth Armytage, Anita Belgiorno-Nettis AM & Luca Belgiorno-Nettis AM, The Late Stephen Center, Denton Family Foundation, David & Fee Hancock Foundation, Judi Hausmann, W & A Johnson, Alan Joyce AC & Shane Lloyd, Maple-Brown Family Foundation Ltd, The Neilson Foundation, Gretel Packer AM, Mrs Roslyn Packer AC, The Petre Foundation, Colin Tate AM & Matthew Fatches, Diana Thomas, Anonymous (3)

CHAIR'S COUNCIL

Alan Joyce AC & Shane Lloyd, Frances Allan & Ian Narev, Jillian Broadbent AC, Mark Burrows AO, Andrew Cameron AM & Cathy Cameron, Robert Cameron AO & Paula Cameron, Michael & Helen Carapiet, Bella & Tim Church, Anne & David Craig, Ian Darling AO & Min Darling, Heather Doig & Rob Koczkar, David Gonski AC & Orli Wargon OAM, GRANTPIRRIE Private, W & A Johnson, Keith Kerridge, Anthony & Jacqueline Kerwick, Sandra Levy AO, Tony Llewellyn-Jones, Peter Mason AM & Kate Mason, Martin McCallum, Simon Mordant AO & Catriona Mordant AM, Mark & Lousie Nelson, Gretel Packer AM, The Petre Foundation, Paul Robertson AO & Lenore Robertson, Anne & John Rumpier, Ian & Kelly Saines, Greg Schneider & Gabbi Phillips, Tony Scotford, Vaux Family Education & Learning Foundation

Thank you to our donors at all levels, who support a bright future for STC.

\$10,000 – \$19,999

Philip Bacon AO, James & Hayley Baillie, Phil & Beverley Birnbaum, David Z. Burger Foundation, Heather & Malcolm Crompton, Dr Michelle Deaker, Stephen Evans, Edward Federman, Liz Gibson, The Hilmer Family Endowment, Simonne Ingham, Lucy & Mike Messara, Mountain Air Foundation, Jonquil Ritter, Geoff Selig, Louise Taggart & Peter Homel, Christine Thomson, Sarah Whyte, James & Clytie Williams, Prof John Yiannikas, Yim Family Foundation, Anonymous (2)

\$5,000 – \$9,999

Colin & Richard Adams, Wayne Adams in memory of Liz O'Neill OAM, Andrew & Natalie Best, Al & Stu Bingham, Christine Bishop, Ellen Borda, Christopher J Browne, Nerida Caesar, Wayne Cahill, Garry Charny & Michele Dulcken, Annabel Crabb & Jeremy Storer, Doherty Swinhoe Family Foundation, Donus Australia Foundation Ltd, Sandra Forbes, Anne Galbraith, Jinnie & Ross Gavin, Wendy Gavin, Louise Hamshere, Meredith Hellicar, Sally Herman, Victoria Holthouse, John & Frances Ingham Foundation, I Kallinikos, Kay Swaney Family, Michael Markiewicz, Philip Mason & Alexandra Joel, Judith McKernan, Sam Meers AO, Andrew Messenger, Karen Moses, Natasha Nankivell, Janine Perrett, Fiona Playfair, Mary Ploughman, Victoria Rati, Sally & Jonathan Rourke, Jillian Segal, Augusta Supple, Victoria Taylor, Susan & Ian Thomas, Daniela Torsh, Gai Wales, Ivan & Karel Wheen, Michael Willes, Annie & Graham Williams, Boh Yeng & Peter Hunt, Carla Zampatti Foundation, Anonymous (12)

\$2,000 – \$4,999

Lillian & Peter Armitage, Victor Baskir, Berg Family Foundation, Phil Breaden, Gerard Byrne & Donna O'Sullivan, Christopher Cosier & Christopher Webber, Dr Bishnu Dutta & Ms Jayati Dutta, Marguerite Gregan & Billy Bennett, Priscilla Guest, Cheryl Hatch, Anita Jacoby AM, Roslyn Johnson, The Knights Family Jabula Foundation, Craig Limkin, Richard Longes, Robin Low, Miranda Marshall, Ian Martin, The Alexandra & Lloyd

LIFE PATRONS

Frances Allan & Ian Narev, Mr Giorgio Armani, Anita Belgiorno-Nettis AM & Luca Belgiorno-Nettis AM, The Caledonia Foundation, Crown Resorts Foundation, Ian Darling AO & Min Darling, Catherine Dovey & Kim Williams AM, Vincent Fairfax Family Foundation, David Fite, Stephen Fitzgerald AO & Julie Fitzgerald, Girsensohn Foundation, David Gonski AC & Orli Wargon OAM, John & Frances Ingham Foundation, W & A Johnson Family Foundation, Mark & Anne Lazberger, Danita R. Lowes, Minderoo Foundation, Simon Mordant AO & Catriona Mordant AM, Cameron & Ilse O'Reilly, Origin Foundation, Packer Family Foundation, Gretel Packer AM, Mrs Roslyn Packer AC, The Paradise Family Foundation, The Petre Foundation, Anne Schofield AM, Shi's Family Foundation, Mr Andrew Stuart, Upton Blanchett Family, Carla Zampatti AC, Anonymous

To join our donor community, please make a tax-deductible donation online at sydneytheatre.com.au/donate

For further information, please contact the STC Philanthropy team on (02) 9250 1976 or foundation@sydneytheatre.com.au

Martin Family Foundation, The McBriarty Family, In Memory of Helen McFadyen, Dr Stephen McNamara, Denise McOnie, Christopher Nicolosi, Dr. Judy Ranka, Anne Schofield AM, Mark Scott, John & Christina Stitt, Georgie Stromland, Wendy Trevor-Jones, Victoria Waldo, Anthony & Annie Whealy, Anonymous (7)

\$1,000 – \$1,999

Michael Adena & Joanne Daly, Pam Anson, David & Leith Bruce-Steer, Mrs Geraldine Bull, Stephen & Annabelle Burley, Hon J C Campbell KC & Mrs Campbell, Anthony & Bronny Carroll, Joseph Catanzariti AM, JT Clark, Angela Compton, Eve Draper, Lou & Peter Duerden, Diane & John Dunlop, Dana Dupere, Suellen Enestrom, Terry Fahy, Valmae Freilich, Judy Friend, Frances Garrick, Tony Gill, Sharon Goldschmidt, Michelle Gortan, Geoffrey Graham, Anna Gray, Ginny & Leslie Green, Alex Greenwicz, Rachel Griffiths, Chris & Gina Grubb, Sophie Guest, Neil Harvey, Margaret R Hawkins, Donald Hector & Sandra Ollington, Andreas & Danielle Heidbrink, Linda Herd, Jennifer Hershon, Dorothy Hoddinott AO, Andrew Housen, Roland Howlett, Dr George Jacobs, Dr Theresa Jacques, Julia Jane Pty Limited, Margaret Johnston, Brigit & David Kirk, Ralph W. Lane OAM, Lesro Pty Ltd, Cheryl Lo, Anne Loveridge, Michael Lynch, Barbara Maidment, Michele Marquet, Rob & Rosemary McCullough, Fiona Merritt, Justin Miller AM, Phillip Mitchelhill, Sue O'Keefe in memory of Lynda Shearer, Alexis & Dominic Patterson, Grant Pearce & Paul Manio, Greg Peirce, Christina Pender, Julia Pucci, Raffi Qasabian & John Wynter, Marija Radojevic, Anne Rein & Rod Gilmour, Peter Riordan, Robin Rodgers, Diana Semmonds, Emine Sermet, Dr Peter & Mrs Diana Southwell-Keely, Sydney Theatre Company Pier Group, Rita Thakur, Josie & Graeme Thompson, Alistair Thomson, Sue Thomson, Dr David Throsby AO & Dr Robin Hughes, Suzanne & Ross Tzannes AM, J & M Wang, In memory of Diana Caroline Ware, Mr Tony Williams, R Willis & J Abernethy, Julia Wokes, Anonymous (29)

SOULMATES

Colin & Richard Adams, Andrew Benson, Mitchell Bourke, Rob Brookman AM, The Late Stephen Center, Sarah Cruickshank, Jayati Dutta, Terry M Fahy, The Late Nancy Fairfax OBE, The Late Denise Robyn Fairservice, Jennifer Fulton, Ros Gestier, Girsensohn Foundation, The Late Diane Patricia Hague, Louise Hamshere, Dorothy Hoddinott AO, The Late Isabelle Joseph, Iphigenia Kallinikos, Greg Peirce, Christine Klein, Wolf Krueger, Peter Louw, The McBriarty Family, DiAnne McDonald, Justin Miller AM, Christopher John Nicolosi, Jonquil & John Ritter, Trudie Anne Rogers, Emine Sermet, Lynette Shelley, The Late Ronald Falk, William Turbet, Anonymous (18)

Donations to the STC Foundation are recognised for 12 months from the date of donation. Donations of \$100 and above are recognised on our website. This listing is current as at 3 July 2023



BOX OFFICE

Sydney Theatre Company
Gadigal Land
Wharf 4/5, 15 Hickson Road
Walsh Bay NSW 2000

Telephone (02) 9250 1777
Toll-free 1800 467 993
(non-Metro NSW)

POST

Sydney Theatre Company
PO Box 777
Millers Point NSW 2000



SYDNEYTHEATRE.COM.AU